

# **WESTERN**

**Automotive Battery**



FEEL THE  
**POWER**



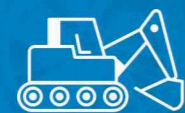
**ENDURANCE SMF BATTERIES**

# ENDURANCE SMF BATTERIES

## LONGER LIFE AND SUPERIOR PERFORMANCE FOR THE HARSH CONDITIONS

When talking about the starting battery power requirement for the vehicle, superior starting, consistent performance and absolute reliability is always required, and that's exactly what you can get with Western Endurance SMF(sealed maintenance free) automotive batteries, a tried and trusted choice in the aftermarket.

With years of technology innovation and continuous improvement, this battery series is able to offer an extensive models selection to suit the most of the vehicles on the market nowadays, no matter it's for regular cars, buses, heavy duty trucks or construction and agricultural machineries.



Calcium plus technology



Dependable performance & durability



Enhanced power plus



Environment friendly



Totally maintenance free



## THE POWER OF EXCELLENCE

Manufactured with calcium battery plate groups plus silver, advanced grid designs and optimised paste formulation, along with the revolutionary maintenance free lid technology combine to deliver superior starting power, exceptional corrosion resistance, longer life and the performance to handle the demands of today's modern vehicles.

## BATTERY STRUCTURE



## THE TECHNOLOGY THAT BEHIND, INSIDE AND BEYOND

### 1. PLATES:

- a).Expanded Full Frame Grid design prevents grid growth & short circuits; Low-resistance,better adhesion of active materials; quick transmission of electrical power
- b).High Density Pasted Cured Plate enhances the adhesion of active materials for better anti-vibration; Improves starting power and longer service life

### 2. SEPARATOR:

The enveloped separator with micro fiber glass lower the electric resistance for reliable starting power and prevents internal short between positive and negative plates.

### 3. HIGH CONDUCTIVE POLES AND TERMINAL:

Mechanical operation ensure no-leakage. Special technical processing, which make sure the poles are more durable than traditional one.

### 4. CENTRAL BUSBAR:

Adopting the most advanced COS machine to connect the plates, which is not easy to break and the busbar has high resistance to vibration, low resistance and good electric conductivity.

### 5. DUST-PROOF FLAME ARRESTER:

Prevent explosion caused by overflow sulphuric acid and charging spark.

### 6. BUILT-IN MAGIC EYE INDICATOR:

Easy to check charging state, green means good condition, black represents charging necessary, white means the battery need to be replaced.

### 7. DOUBLE LID & HEAT SEALED COVER:

Prevent leakage by dual structure of separation of gas and liquid, makes the battery totally maintenance free.

### 8. INTEGRATED HANDLE DESIGN:




Enhances safety by Integrated computer design, easy for installation and transportation.

### 9. POLYPROPYLENE BATTERY CASE:

Durable material combines light weight with high impact strength. Reinforced design to support battery elements to withstand road vibration.

If you are serious about the driving, we get the right battery for you...



-  Get Start without Any Hesitance
-  Move on with Consistance Power
-  WESTERN™ Automotive Battery  
Start Positive. Stay Positive.